



  
**CROWN**  
LETS 4 U

**TO LET**



**£1,200 Per Calendar Month**

**2 BED GROUND FLOOR MAISONETTE**  
**Penge Road, Anerley, London, SE20**

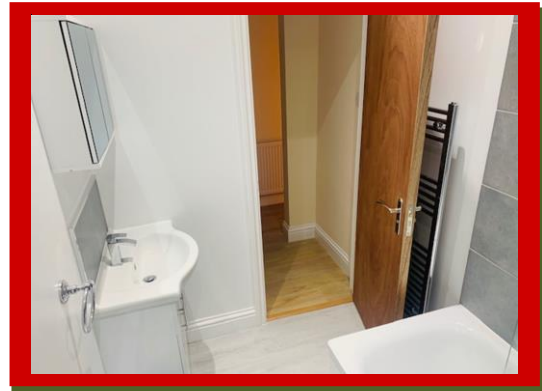
Crown Lets 4u are proud to present a newly refurbished two bedroom ground floor maisonette. This unfurnished modern property has its own private entrance and has a rear garden. This marvellous flat comprises off one double bedroom with bay windows, one single bedroom, spacious lounge, separate fully fitted modern kitchen with gas cooker, electric oven, fridge and freezer. The modern family bathroom comes with three piece bath suites with attached shower, shower glass screen, chrome towel radiator and a mirror cabinet. The property benefits from two storage rooms, gas central heating, double glazed windows and laminated flooring throughout. Stone throw away from Harris Academy School, South Norwood Lake, Betts Park, Anerley Station, Norwood Junction Station and Harrington Road Tram Stop.

**UNFURNISHED**

**AVAILABLE NOW!**

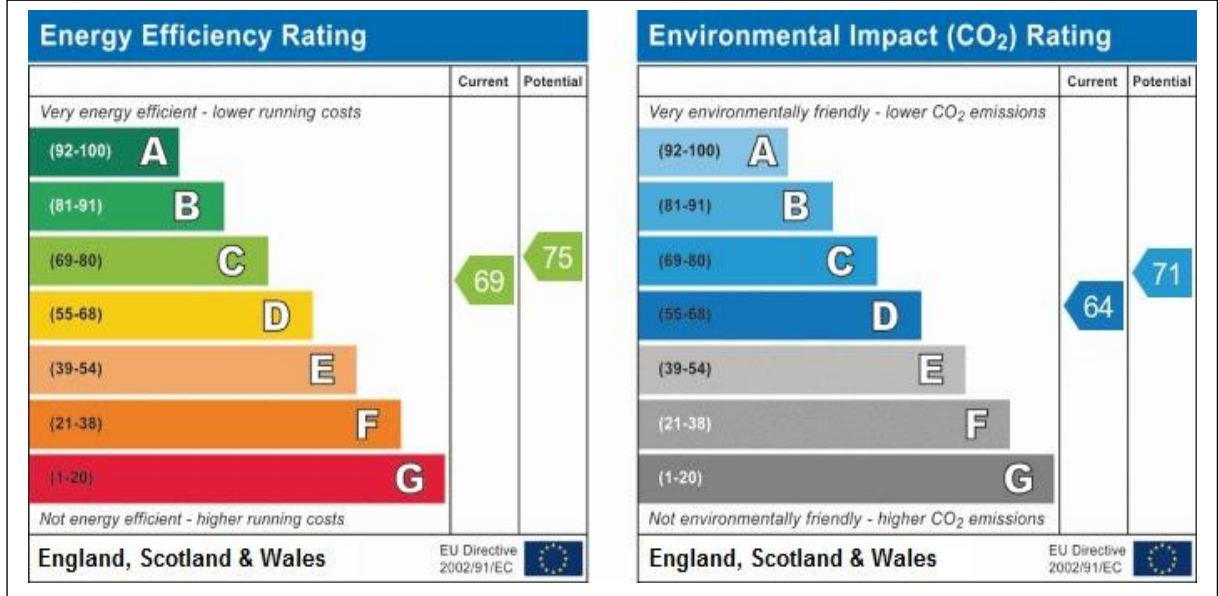
- Newly Refurbished
- Two Bedrooms
- Ground Floor Maisonette
- Separate Modern Kitchen
- Spacious Lounge
- Modern Bathroom
- Fully Fitted Kitchen
- Two Storage Rooms
- Double Glazed Windows
- Gas Central Heating
- Fully Fitted Kitchen
- Laminated Flooring
- Rear Garden
- Unfurnished
- Close To Local Amenities

**DSS CAN BE CONSIDERED WITH 5 WEEKS DEPOSIT, 1 MONTH RENT IN ADVANCE AND MUST HAVE A GUARANTOR THAT IS A PROPERTY OWNER.**

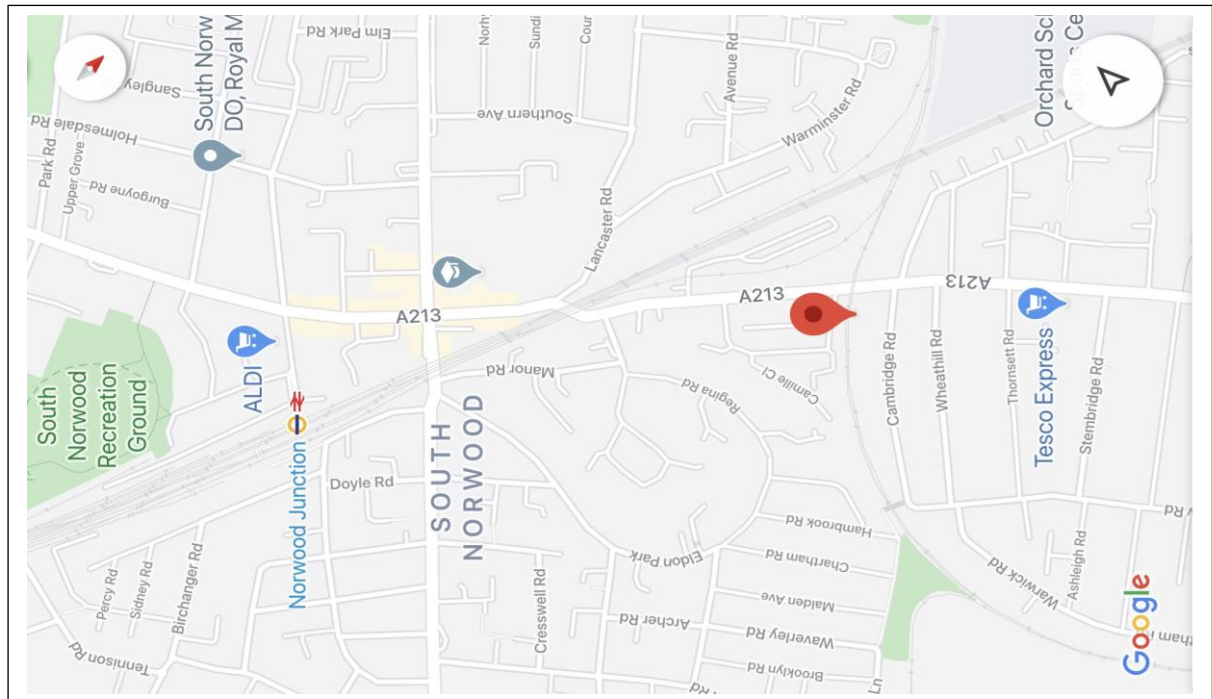




## EPC



## MAP&POSTCODE: SE20 7UL



**Croydon Branch:** 292 London Road, Croydon, Surrey, CR0 2TG

**Tel:** 020 8684 6677    **Tel:** 020 8764 1111    **Fax:** 0872 115 6090    **Email:** info@crownlets4u.co.uk

[www.crownlets4u.co.uk](http://www.crownlets4u.co.uk)