



CROWN

LETS 4 U

TO LET



£1,550 Monthly

2 bedroom Maisonette Beddington Lane, Croydon, CR0

Crown Lets 4u Estate Agents are delighted to present a spacious 2 bed first floor maisonette with a private rear garden. The property benefits from one double bedroom, a generous size second bedroom, spacious lounge and a separate fully fitted kitchen with gas cooker, electric oven, and fridge/freezer. There is also a family bathroom with bathtub above power shower, hand wash basin and WC. This unfurnished property further benefits from gas central heating and a private rear garden with part decking and a landscape garden.

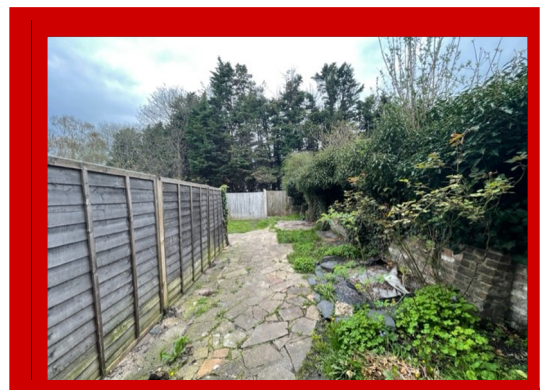
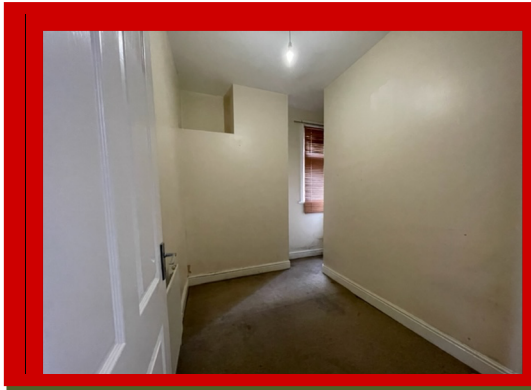
This property is only a stone throw away from Beddington Lane Tram Stop, local schools, Super Store ASDA and close to all local amenities. Also close to Croydon and Wallington town centre and easy transport by bus on Beddington Lane.

Available now!

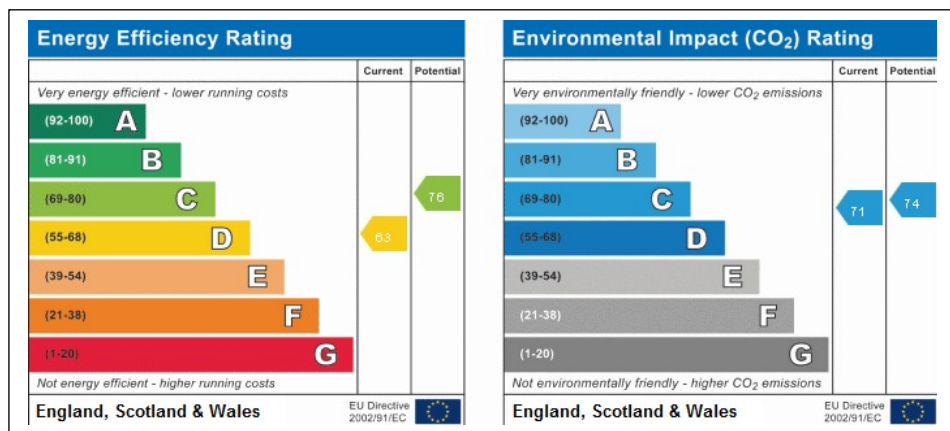
UNFURNISHED

AVAILABLE NOW!

- 2 Bed Maisonette
- Ground Floor
- One Double Bedroom
- One Single Bedroom
- Spacious Lounge
- Separate Kitchen
- Modern Kitchen
- Modern Bathroom
- Unfurnished
- Gas Central Heating
- Private Rear Garden
- Close to ASDA
- Close to Beddington Lane Tram Stop



EPC



Croydon Branch: 292 London Road, Croydon, Surrey, CR0 2TG

Tel: 020 8684 6677 Tel: 020 8764 1111 Fax: 0872 115 6090 Email: info@crowplets4u.co.uk

www.crowplets4u.co.uk